

TOWN OF RUTLAND
PLANNING COMMISSION
MINUTES
8-20-15

Meeting open at 7:05 PM

Commissioners Present:

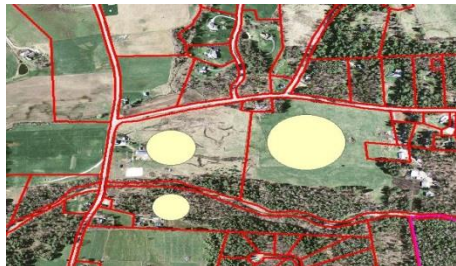
Howard Burgess, Andrew McKane, Dana Peterson, Barbara Pulling, Norman Cohen and alternate Alan Biederman

The meeting opened at 7:05 P.M.

Mr. Ed Bove, Executive Director of the Rutland Regional Planning Commission (RRPC) met with Commissioners and reviewed the draft Future Town Land Use Map.

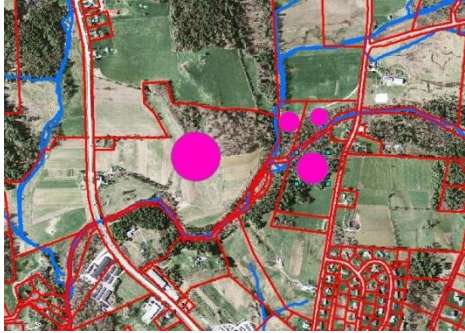
Commissioners made changes to the draft map as follows:

Mr. Peterson moved to change three parcels of land on the East Pittsford Road to the working lands designation.

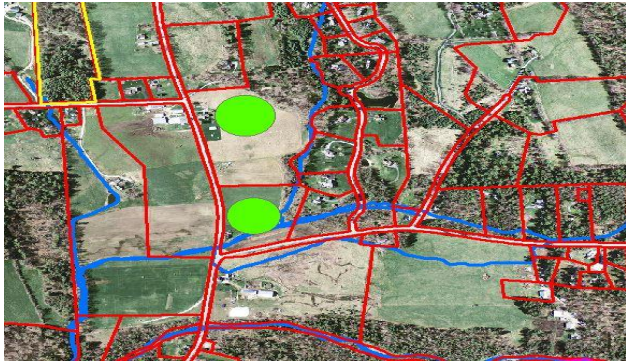


Ms. Pulling made a second to the motion. The motion passed unanimously.

Mr. Peterson made a motion to include in the Working Lands designation the parcels that stretch from the western side of the East Pittsford Road to the R40 C parcels which boarder US Route 7 North. Ms. Pulling made a second to the motion. The motion passed unanimously.



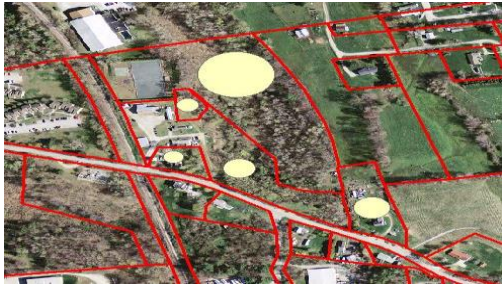
Mr. Peterson moved to designate the land owned by the Hathaway's, located east of Blueberry Lane, as working land. Ms. Pulling made a second to the motion. The motion passed unanimously.



Mr. Peterson made a motion to accept the Town of Rutland Land Use Map North East as currently amended. Mr. Cohen made a second to the motion. The motion passed unanimously.

Mr. Peterson made a motion to accept the Town Land Use Map South East Quadrant as presented. Ms. Pulling made a second to the motion. Mr. Peterson withdrew his motion. Ms. Pulling made a second to the motion to withdraw the motion. The motion passed unanimously.

Ms. Pulling moved to change the five parcels on the north side of Cold River Road, east of the railroad tracks, from Commercial / Industrial to R40 C. Mr. Peterson made a second to the motion. The motion passed unanimously.



Mr. Bove cited the fact that the Town Plan R40 C permitted uses does not allow “light commercial”. He said it should be added as a permitted use. Commissioners agreed.

Mr. Peterson made a motion to accept the Town of Rutland Future Land Use map Southeast Quadrant as amended. Ms. Pulling made a second to the motion. The motion passed unanimously.

Ms. Pulling announced that there would be a meeting in West Rutland on August 31st to receive comments regarding the West Rutland / Rutland Town Smart Growth connection grant. Ms. Pulling told Commissioners that she, Ms. Mary Ashcroft and Mr. Byron Hathaway are on the Steering Committee. She said a group of consultants are leading the study.

Ms. Pulling moved to approve the 6-11-15 minutes with corrections. Mr. Cohen made a second to the motion. The motion passed by a vote of 4 to 0. Mr. Cohen abstained from the vote.

Mr. Cohen moved to approve the 7-16-15 minutes as corrected. Ms. Pulling made a second to the motion. The motion passed unanimously.

Mr. Cohen made a motion to adjourn. Ms. Pulling made a second to the motion. The motion passed unanimously.

Andrew McKane, Chairman
9-17-15

