

Rutland Town STP BP23(14)

Local Concerns Meeting Notes

November 19, 2024 @ 5:00 pm

Stantec's meeting presentation is attached for reference. This meeting was recorded and can be viewed here:

[LOCAL CONCERNS MEETING \(#1\) US Route 7 North, Rutland Town. Shared Use Path - November 19, 2024 - YouTube](#)

Project Team: Erik Alling (Stantec), Kurt Hathaway (Rutland Town), Joe Denardo (Rutland Town), Dave Sears (Rutland Town), Bill Sweet (Rutland Town), Steffanie Bourque (Rutland Regional Planning Commission)

In-Person Participants: see attached sign in sheet

Virtual Participants: Bethany Yon

Introductions: Project team members from Stantec, the Town, RRPC, and VTrans were introduced (see slide 2).

Meeting Agenda: Erik A. reviewed the agenda for the Local Concerns public information meeting (see slide 3).

Project Location & Goals: Erik A. described the project location along the western side of US Route 7 connecting with the existing sidewalk in Rutland City on the south end and extending to the intersection with Post Road on the north end. The project goals were recapped (see slide 4).

2022 Route 7 Sidewalk Extension Scoping Study: Erik A. explained that this project is an outcome of a scoping study completed in 2022 (see slide 5).

Typical Project Development Process: Erik A. described the typical project development process. Project Definition was completed in 2022 with the scoping study. Funding for this project, the preferred alternative from the 2022 scoping effort, was secured by the Town through a VTrans Bicycle and Pedestrian grant. We are in the early stages of the Engineering phase, which kicked off in September 2024. When the engineering is complete, the project will advance to Construction (see slide 6).

Existing Conditions: Erik A. provided a brief overview of the existing conditions along the project corridor – speed limit, size of road shoulders, road right-of way width, annual average daily traffic count, etc. (see slide 7).

Project Overview and Potential Impacts: Because design work has not started, Erik A. shared the concept plans from the scoping phase to show the proposed location of the new 10-foot wide paved shared use path, which is intended to be separated from the edge of pavement/curb by a 5-foot wide grass buffer.

The concept plans show where the new shared use path will tie into the existing sidewalk on the south end in Rutland City and north end on Post Road; the proposed locations for crosswalks, a retaining wall, safety railing; and potential impacts to utilities (poles and culverts) and properties (see slides 8-9). A new pedestrian crossing signal that will connect to the existing traffic light system at the US Route 7 and Post Road intersection are included in this project.

The extent of utility and property impacts will be further defined as the survey data is collected and design proceeds.

Next Steps: Erik A. reviewed the next steps in the Engineering and Construction phases (see slide 10). The Engineering phase is targeted for completion early in 2027 with bidding for construction in early 2027 and construction complete by fall 2027.

Questions/Comments: Highlights are provided below.

- What are the proposed limits of disturbance? Will all impacts be within the road right-of-way or will easements (temporary or permanent) be needed for the project?
- Are potentially impacted property owners aware of/supportive of the project?
- How will this project transition into the new pavement markings on US Route 7 in Rutland City?
- Can the center turn lane on US Route 7 in Rutland City be extended through Rutland Town to the intersection with McKinley Avenue as part of this project?
- How will the new shared use path tie into the existing sidewalk on Post Road?
- Due to high vehicle speeds on US Route 7 near the Post Road intersection, can the project include extra safety measures for the proposed pedestrian crossing at this intersection?
- How does the Town provide public notice for these types of meetings? Suggest also posting notices on social media – Facebook and Front Porch Forum.
- The rationale for locating the new path on the west side of US Route 7 was explained.

Rutland STP BP23(4) Route 7 Shared Use Path Sidewalk Extension



Welcome to
The Town of Rutland, Vermont



Public
Information
Meeting



Town of Rutland:

Joe Denardo – Town of Rutland

Dave Sears – Town of Rutland

Kurt Hathaway – Town of Rutland

Bill Sweet – Town of Rutland

Steffanie Bourque – RRPC, MPM

Project Team

Stantec Consulting:

Israel Maynard – Project Manager

Erik Alling – Lead Designer

VTrans:

Derek Kenison – Project Supervisor

Tonight's Purpose

- Share information related to upcoming path construction project
- Review project development process
- Review project area
- Review existing conditions
- Proposed path
- Discuss next steps, answer question

Project Location

Project Goals

- Create a link between existing facilities
- Support the Town's objective to develop a network of paths, lanes and sidewalks for walking and non-motorized vehicle use
- Increase pedestrian and cyclist safety



Project Background

Project based on 2022 Route 7 Sidewalk Extension
Scoping Study

Based on input from the public and the Town, the preferred alternative is Alternative 1B:

- Approximately 1,670 linear feet of new 10-foot-wide bituminous concrete shared use path with a 5-foot grass edge zone along the western side of US Route 7.
- Approximately 130 linear feet of new retaining wall adjacent to parking lot.
- Approximately 635 linear feet of new granite curb north of McKinley Avenue and on Post Road.
- Approximately 205 linear feet of safety railing along the retaining walls and at the culvert north of McKinley Avenue.
- One catch basin with 18-inch drainpipe at the low point between McKinley Avenue and Post Road.



Scoping Study Report

ROUTE 7 SIDEWALK EXTENSION RUTLAND TOWN TAP TA20(10)

RUTLAND, VERMONT

June 8, 2022

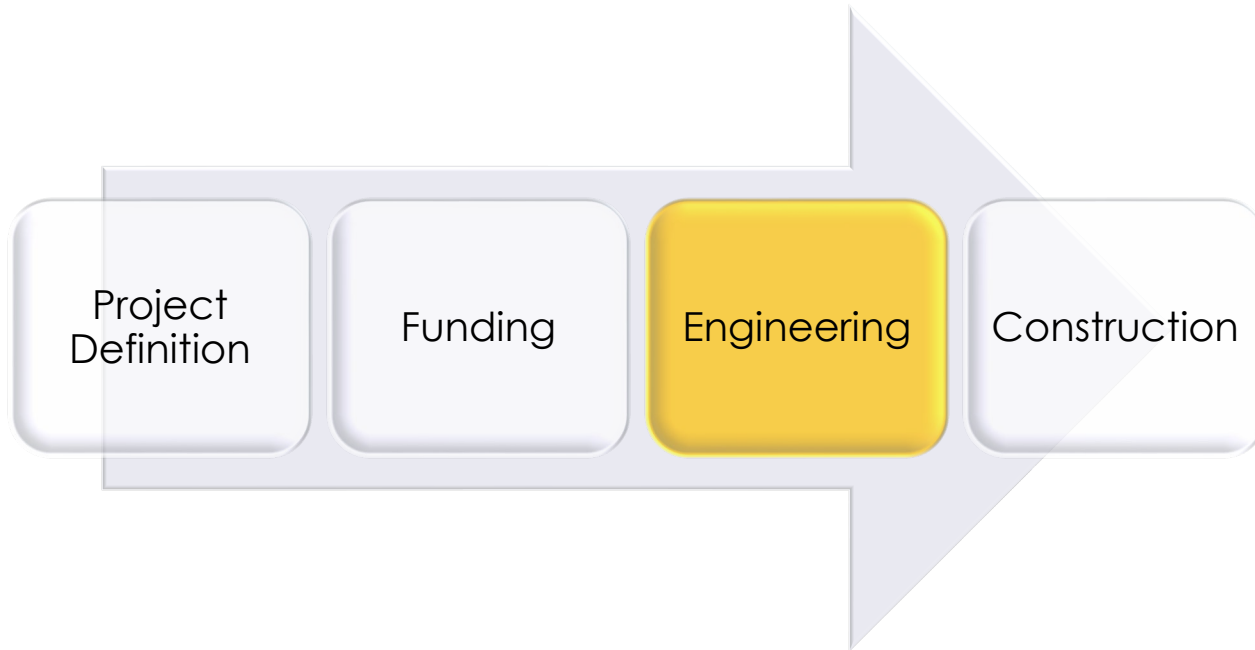


DUFRESNE GROUP
CONSULTING ENGINEERS

Springfield, VT | Barre, VT | St. Johnsbury, VT | Manchester Center, VT | 802.674.2904 | info@dufresnegroup.com | www.dufresnegroup.com

Submitted to:
Bill Sweet, Town Administrative Assistant
Town of Rutland
181 Business Route 4
Center Rutland, VT 05736

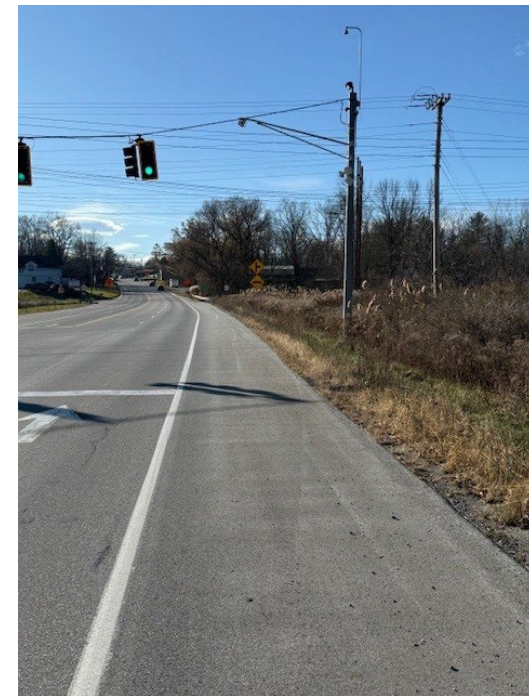
Typical Project Process

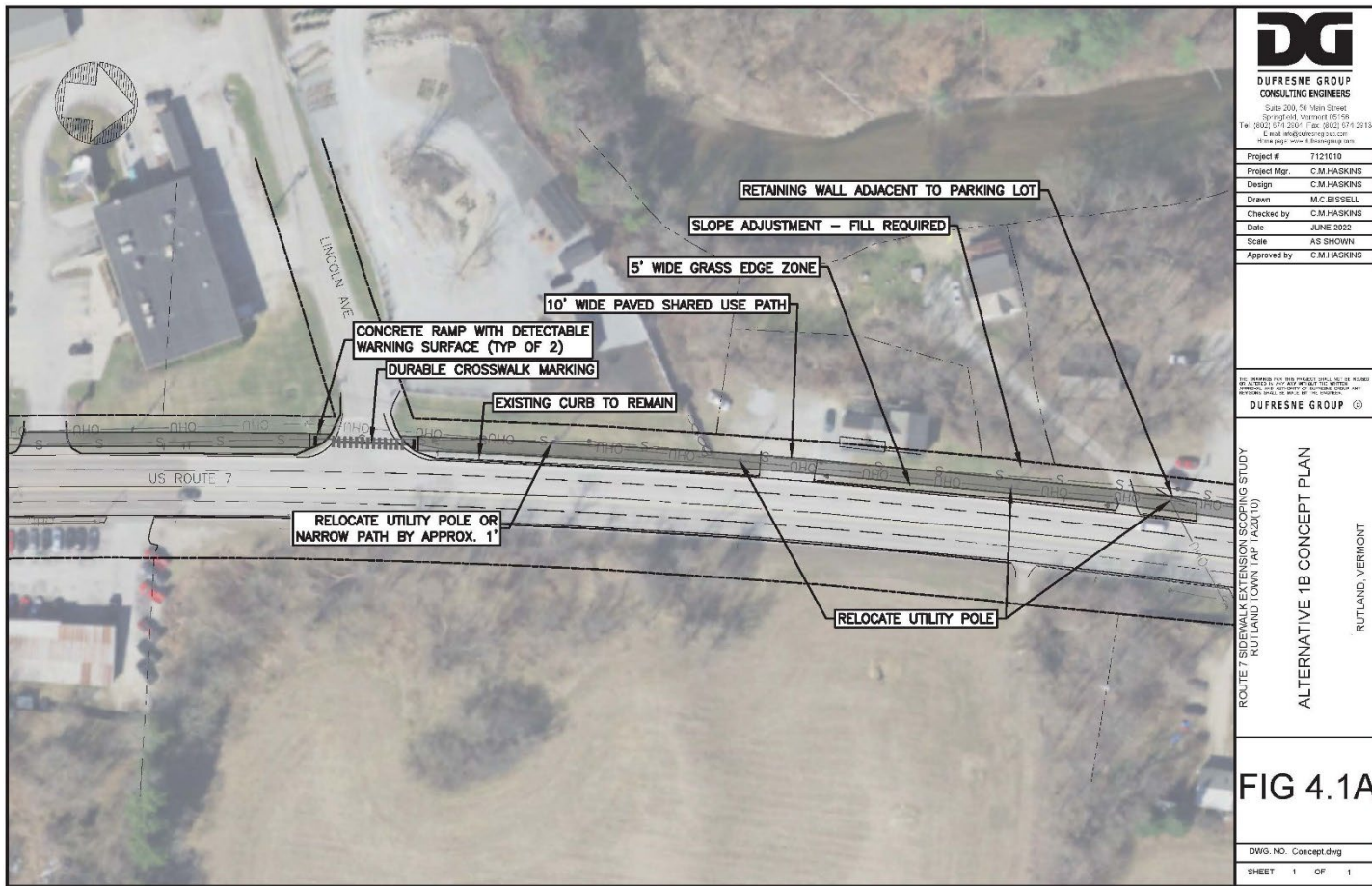


Existing Conditions

US Route 7 Existing Conditions

- Speed Limit: 40mph
- Variable shoulders
- 12,378 AADT
- ROW width: 99'
- Curbed and uncurbed
- Aerial and underground utilities within project area





DG
DUFRESNE GROUP
CONSULTING ENGINEERS
 Suite 200, 55 North Street
 Springfield, Vermont 05156
 Tel: (802) 574-2000 Fax: (802) 574-2015
 E-mail: info@dugroup.com
 Website: www.dugroup.com

Project # 7121010
 Project Mgr. C.M. HASKINS
 Design C.M. HASKINS
 Drawn M.C. BISSELL
 Checked by C.M. HASKINS
 Date JUNE 2022
 Scale AS SHOWN
 Approved by C.M. HASKINS

WE WARRANT THAT THE MATERIALS, DESIGN, AND CONSTRUCTION OF THE PROJECT SHALL BE IN ACCORDANCE WITH THE MOST RECENT EDITIONS OF THE VTDOT DESIGN MANUAL AND THE VTDOT SPECIFICATIONS FOR ROADWAY CONSTRUCTION.

DUFRESNE GROUP

ROUTE 7 SIDEWALK EXTENSION SCOPING STUDY
 RUTLAND TOWN TAP TA201(10)

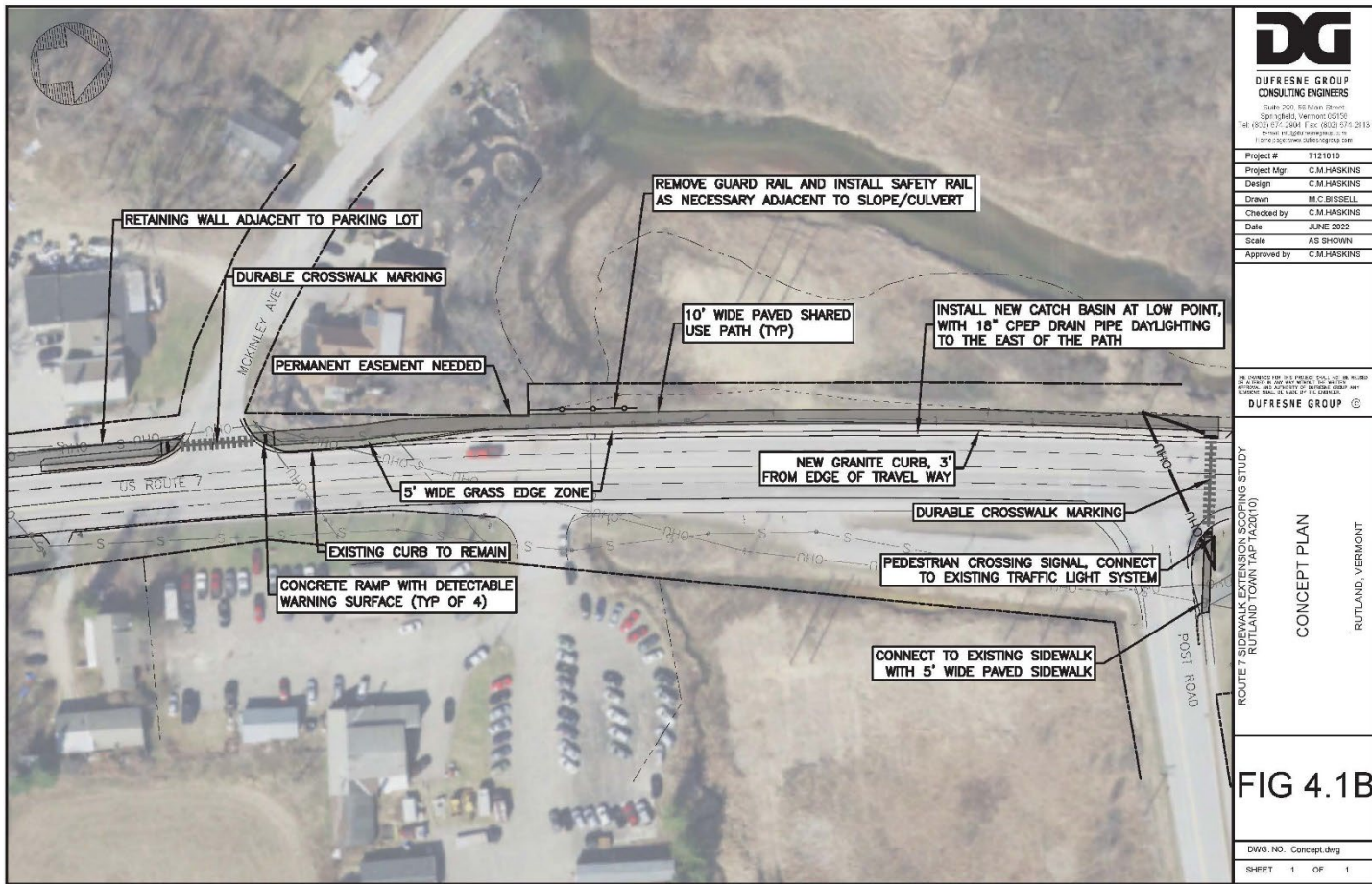
ALTERNATIVE 1B CONCEPT PLAN

RUTLAND, VERMONT

FIG 4.1A

DWG. NO. Concept.dwg
 SHEET 1 OF 1

Project Plan View and Potential Impacts



DUFRESNE GROUP
CONSULTING ENGINEERS
State: 201, Station: 2844
Springfield, Vermont 05156
Tel: (802) 477-2604 | Fax: (802) 574-2615
Email: info@dugroup.com
Home page: www.dugroup.com

Project #:	7121010
Project Mgr.:	C.M. HASKINS
Design:	C.M. HASKINS
Drawn:	M.C. BRISSELL
Checked by:	C.M. HASKINS
Date:	JUNE 2022
Scale:	AS SHOWN
Approved by:	C.M. HASKINS

WE WARRANT FOR THE ACCURACY OF THE INFORMATION PROVIDED HEREON AND THE QUALITY OF THE DESIGN GROUP AND ITS CONSULTANTS' WORK. WE SHALL NOT BE RESPONSIBLE FOR ANY OTHER INFORMATION OR ACTIONS.

DUFRESNE GROUP ©

Project Plan View and Potential Impacts

Next Steps

- NEPA Complete July 2025
- Preliminary Plans (Summer 2025)
- Right of Way Clearance (Mid-2026)
- Final Plans and Specifications (Summer 2026)
- Contract Plans and Specs (Early 2027)
- Bidding (Early 2027)
- Construction (Complete by fall 2027)

Thank you!
Questions?

Contact information

Steffanie Bourque, MPM:
sbourque@rutlandrpc.org

Israel Maynard, Stantec:
israel.maynard@stantec.com

Erik Alling, Stantec:
erik.alling@stantec.com